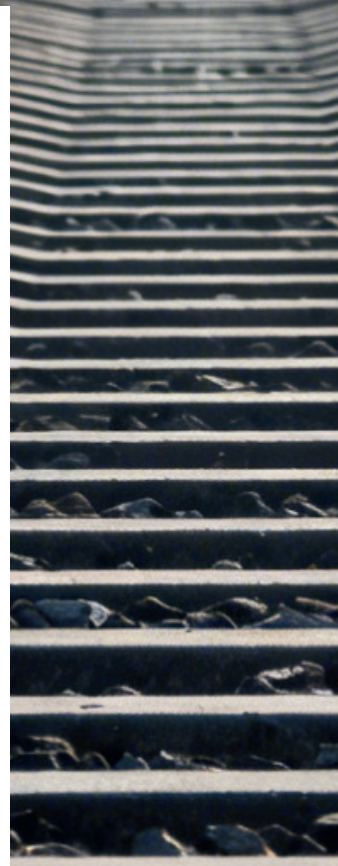


# NABLA C1 Blade Fastening System



 赛福扣件系统 | **SFFST**  
SAFE RAIL FASTENING SYSTEM

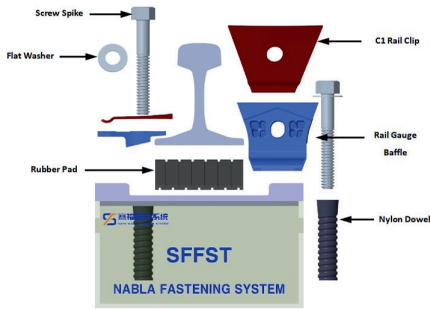


ISO 9001 / 14001 / 45001



# SFFST NABLA C1 Blade Fastening System

This fastening system is suitable for use on any I-beam rail, depending on line operational conditions and track gauge requirements. Standard compliance: EN 13481-2, Category C.



## Configuration of components:

Blade: C1

Screw Spike: Tr 22X160

Flat washer:  $\varnothing 50 \times \varnothing 25 \times 3$

Rail Gauge Baffle: 6#/8#

Rubber Pad: subject to the line design

Nylon Dowel: Tr22XL

## Performance indicators:

Maximum axle load: 26t

Minimum curve radius: R150m

Speed:  $\leq 100 \text{ km/h}$

Longitudinal rail resistance:  $\geq 7 \text{ kN}$

Attenuation of impact loads:  $> 30\%$

Dual rail gauge expansion:  $\leq 6 \text{ mm}$

Longitudinal resistance change rate:  $\leq 20\%$

Vertical stiffness change rate:  $\leq 25\%$

Clamping force change rate:  $\leq 20\%$

Electrical resistance:  $\geq 5 \text{ k}\Omega$

Effect of exposure to severe environmental conditions:

Smooth disassembly

Proof load test for pull-out resistance:  $\geq 60 \text{ kN}$



+86 15215826075



+86 15215826075



+66 63 719 1409



SAFE Rail Fastening System



SAFE Rail Fastening System