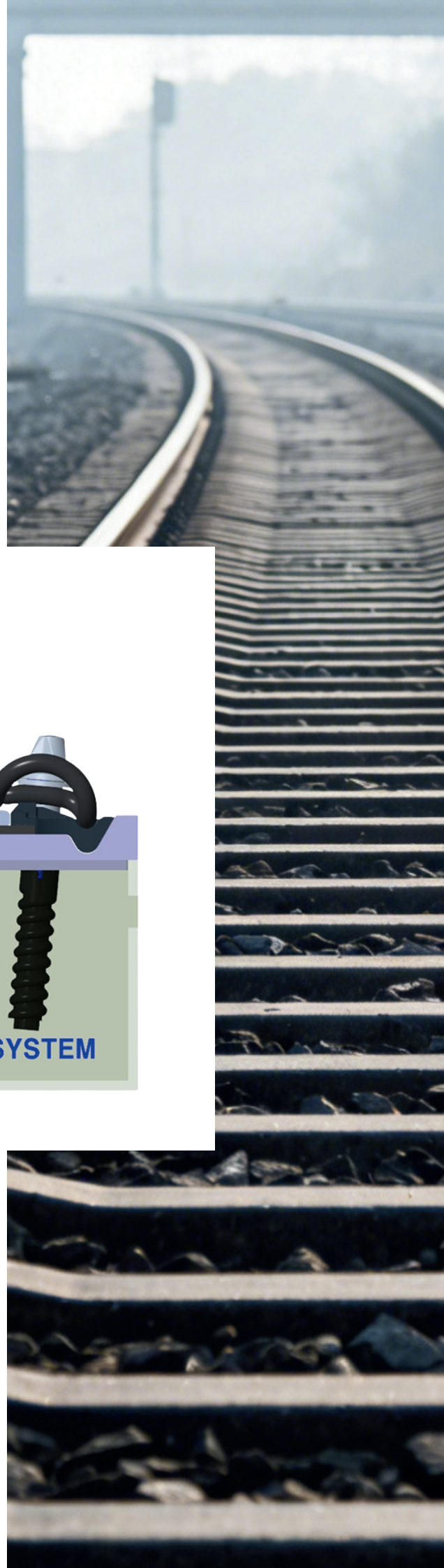


# S30HH Fastening System



 赛福扣件系统 | **SFFST**  
SAFE RAIL FASTENING SYSTEM



ISO 9001 / 14001 / 45001

# SFFST S30HH Fastening System

This fastening system is suitable for heavy-duty railway tracks and can also be applied to conventional and high-speed railway tracks. Standard compliance: EN 13481-2, Category C, D, E.



## Configuration of components:

Tension Clamp: SFFST 30

Screw Spike&Flat Washer: Ss35/DHS35&ULs7

Angle Guide Plates: sffst 30k -12 HH

Rail Pad: Zw xx/175/y

Nylon-Dowel: sdu25

## Performance indicators:

Maximum axle load:	26t	26t	35t
Minimum curve radius:	R150m	R400m	R150m
Speed:	≤ 250km/h	> 250km/h	≤ 160km/h
Longitudinal rail resistance:	≥ 9kN	≥ 9kN	≥ 9kN
System Clamping force:	≥ 23kN	≥ 23kN	≥ 25kN
Dual rail gauge expansion:	≤ 6mm		
Longitudinal resistance change rate:	≤ 20%		
Vertical stiffness change rate:	≤ 25%		
Clamping force change rate:	≤ 20%		
Electrical resistance:	≥ 5kΩ		
Effect of exposure to severe environmental conditions:	Smooth disassembly		
Proof load test for pull-out resistance:	≥ 60kN		
Gauge adjustment range:	±10mm		



+86 15215826075



+86 15215826075



+66 63 719 1409



SAFE Rail Fastening System



SAFE Rail Fastening System

Huangtanyang EDZ, Sanmen County,  
Zhejiang Province, P.R. China

+86 15215826075  
Email: info@sffst.com

www.**SFFST**.com