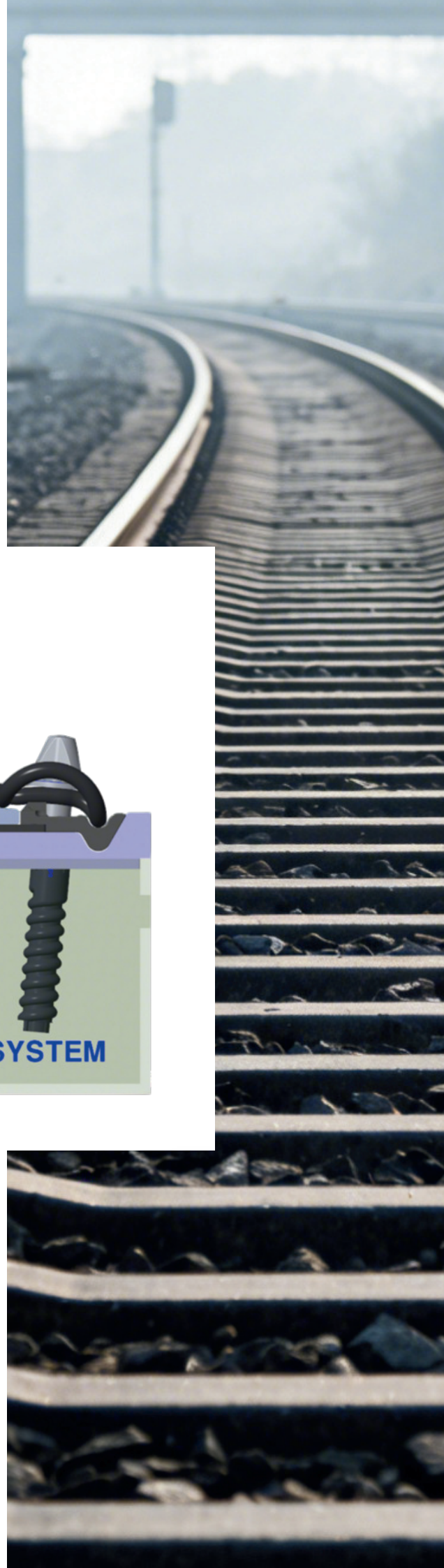


# W14 FASTENING SYSTEM



 赛福扣件系统 | **SFFST**  
SAFE RAIL FASTENING SYSTEM



ISO 9001 / 14001 / 45001

# SFFST W14 Fastening System

This fastening system is designed for use on conventional and high-speed railway tracks;  
Standard compliance: EN 13481-2, Category C, D.



## Configuration of components:

Tension Clamp: Skl 14  
Screw Spike&Flat Washer: Ss35/DHS35&ULs7  
Angle Guide Plates: Wfp 14k -12  
Rail Pad: Zw687 xx/160/y  
Dowel: sdu25

## Performance indicators:

Maximum axle load: 26t  
Minimum curve radius: R150m R400m  
Speed:  $\leq 250\text{km/h}$   $> 250\text{km/h}$   
Longitudinal rail resistance:  $\geq 9\text{kN}$   
System Clamping force:  $\geq 18\text{kN}$   
Dual rail gauge expansion:  $\leq 6\text{mm}$   
Longitudinal resistance change rate:  $\leq 20\%$   
Vertical stiffness change rate:  $\leq 25\%$   
Clamping force change rate:  $\leq 20\%$   
Electrical resistance:  $\geq 5\text{k}\Omega$   
Effect of exposure to severe environmental conditions:  
Smooth disassembly  
Proof load test for pull-out resistance:  $\geq 60\text{kN}$   
Gauge adjustment range:  $\pm 10\text{mm}$



+86 15215826075



+86 15215826075



+66 63 719 1409



SAFE Rail Fastening System



SAFE Rail Fastening System