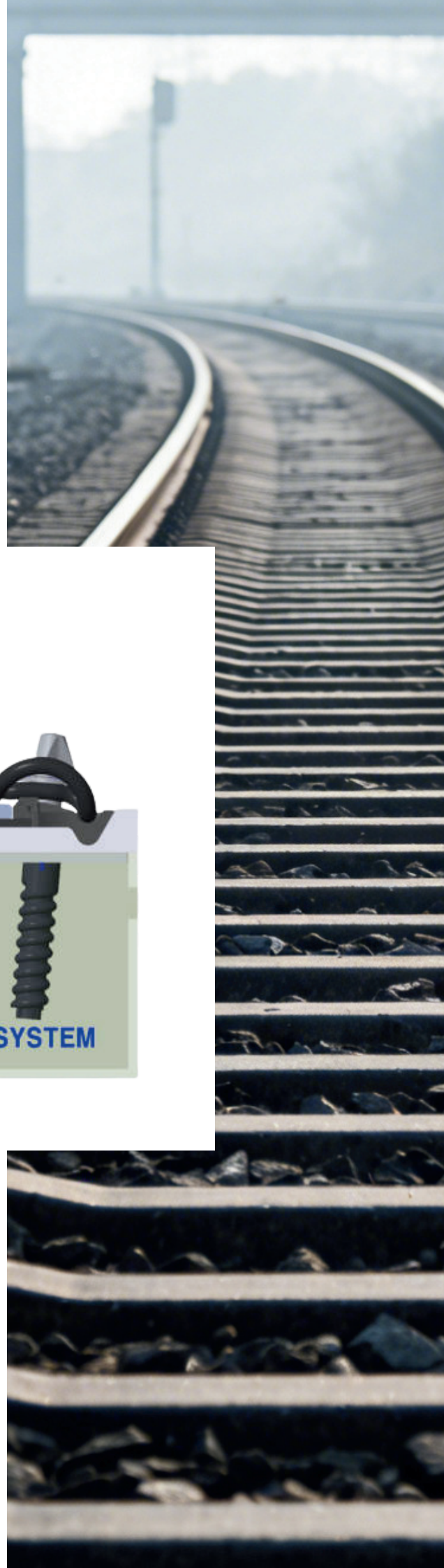


W14HH FASTENING SYSTEM



 赛福扣件系统 | **SFFST**
SAFE RAIL FASTENING SYSTEM



ISO 9001 / 14001 / 45001

SFFST W14HH Fastening System

This fastening system is designed for heavy-duty railway tracks and is also suitable for conventional and high-speed railway tracks. Standard compliance: EN 13481-2, Category C, D, E.



Configuration of components:

Tension Clamp: Skl 14R

Screw Spike&Flat Washer: Ss35/DHS35&ULs7

Angle Guide Plates: Wfp 14k 700R-12 HH

Rail Pad: Zw xx/175/y

Dowel: sdu25

Performance indicators:

Maximum axle load:	26t	26t	35t
Minimum curve radius:	R150m	R400m	R150m
Speed:	≤ 250km/h	> 250km/h	≤ 160km/h
Longitudinal rail resistance :	≥ 9kN		
System clamping force:	≥ 23kN		
Dual rail gauge expansion :	≤ 6mm		
Longitudinal resistance change rate:	≤ 20%		
Vertical stiffness change rate:	≤ 25%		
Clamping force change rate:	≤ 20%		
Electrical resistance:	≥ 5kΩ		
Effect of exposure to severe environmental conditions:	Smooth disassembly		
Proof load test for pull-out resistance :	≥ 60kN		
Gauge adjustment range:	±10mm		



+86 15215826075



+86 15215826075



+66 63 719 1409



SAFE Rail Fastening System



SAFE Rail Fastening System