

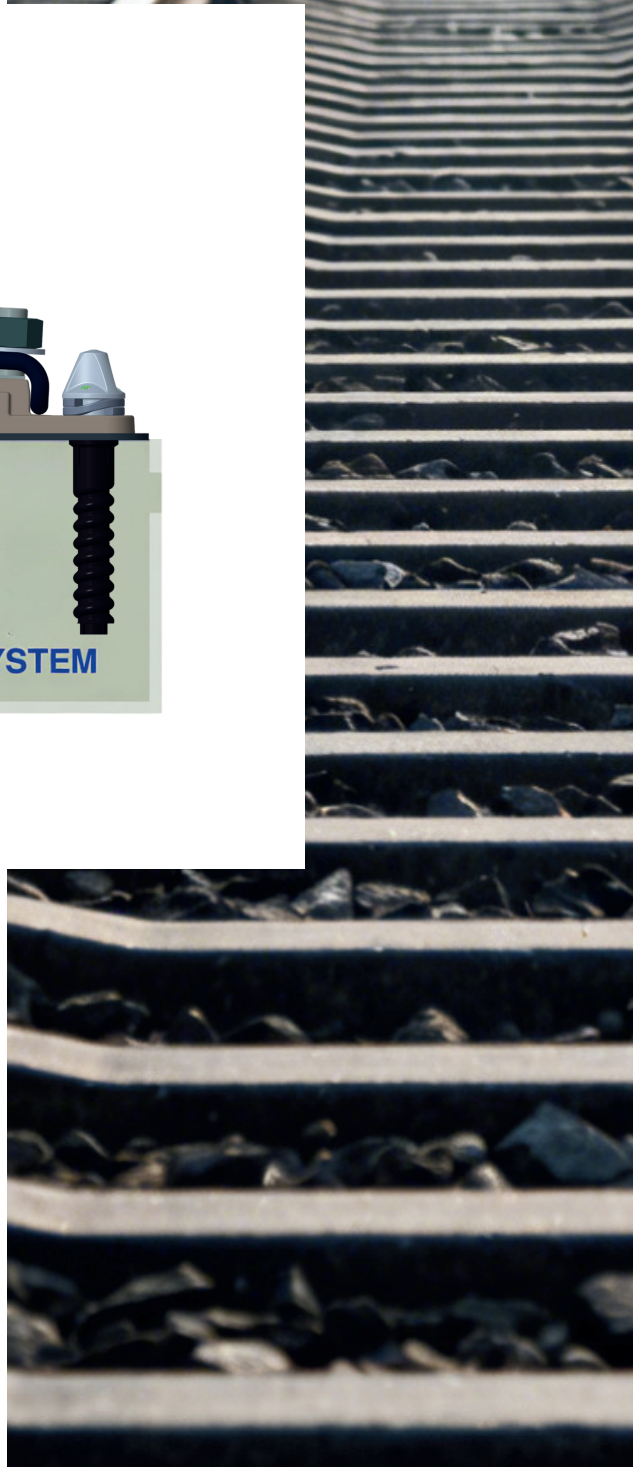
# W12 FASTENING SYSTEM



 赛福扣件系统 | SFFST  
SAFE RAIL FASTENING SYSTEM

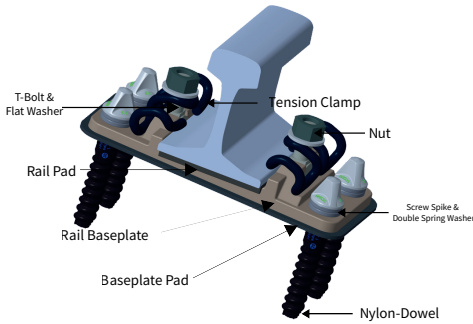


ISO 9001 / 14001 / 45001



# SFFST W12 Fastening System

This fastening system is suitable for heavy-duty railway tracks and can also be applied to conventional and high-speed railway tracks. Standard compliance: EN 13481-2.



## Configuration of components:

Tension Clamp: Skl 12  
 T-Bolt: Hs32-55  
 Nut: Sw39-M22  
 Flat Washer: Uls6  
 Rail Pad: Zw 687  
 Rail Baseplate: RP xx/yy/160  
 Baseplate Pad: Zwp xx/yy/5  
 Screw Spike: Ss35/DHS35  
 Double Spring Washer: Fe6  
 Nylon-Dowel: sdu25



## Performance indicators:

Maximum axle load:	18t	26t	35t
Minimum curve radius:	R80m	R150m/R400m	R150m
Speed:	≤ 250km/h	≤ 250km/h / > 250km/h	≤ 160km/h
Longitudinal rail resistance:	≥ 9kN	≥ 9kN	≥ 9kN
System clamping force:	≥ 24kN	≥ 24kN	≥ 24kN
Dual rail gauge expansion:	≤ 6mm		
Longitudinal resistance change rate:	≤ 20%		
Vertical stiffness change rate:	≤ 25%		
Clamping force change rate:	≤ 20%		
Electrical resistance:	≥ 5kΩ		
Effect of exposure to severe environmental conditions:	Smooth disassembly		
Proof load test for pull-out resistance:	≥ 60kN		



+86 15215826075



+86 15215826075



+66 63 719 1409



SAFE Rail Fastening System



SAFE Rail Fastening System

Huangtanyang EDZ, Sanmen County,  
Zhejiang Province, P.R. China

+86 15215826075  
Email: info@sffst.com

www.SFFST.com